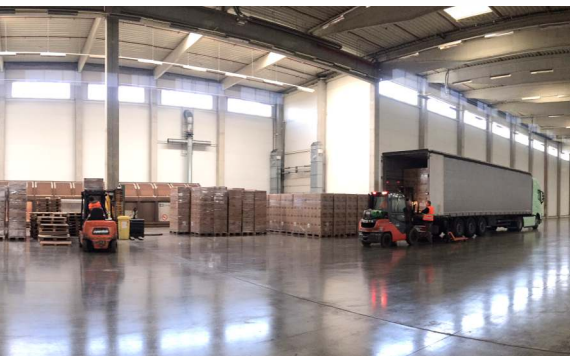
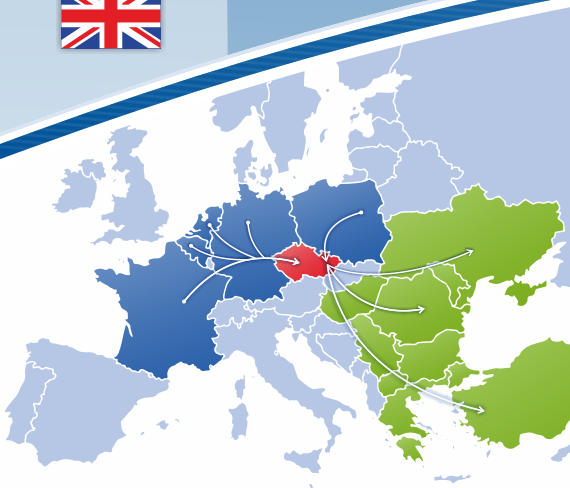




- ▲ logistics company
- ▲ annual turnover 65 mill. EUR
- ▲ 50 employees

MULTIMEDIA



Truck import

Countries: PL, SK, DE, NL, BE, SW, ...

Transloading + terminal

Truck -> wagon

Truck -> storage -> wagon



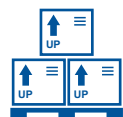
Warehouses: Ostrava, Lovosice

Covered warehouses approx. 42 000 m²

Spaces connected to the railway tracks

Possibility to use special large capacity wagons

Terminal operations



Maximum use of the loading space of the wagons

Transloading truck : wagon – 1:1, 2:1, 3:1

Securing of the cargo, possibility of palletizing, foiling, storage

Railway transport



Further railway transport mainly **in the direction to Balkans and CIS countries** (UA, BG, RO, TU, GR, MK, ALB, ...)

Daily monitoring of the transport

Certification



ISO 9001:2008

GMP+ B4 (Good Manufacturing Practice)

We can speak



Czech, Slovak, German, English, Hungarian, Italian, French, Russian, Spanish, Polish (own office in Warsaw), Romanian (own office in Bucharest)

